



**INTERNATIONAL  
GEMOLOGICAL  
INSTITUTE**

**LABORATORY GROWN DIAMOND REPORT**

**IGI LABORATORY GROWN DIAMOND IDENTIFICATION REPORT**

06/30/2021  
 IGI Report Number LG480171586  
 Shape and Cutting Style ROUND BRILLIANT  
 Measurements 4.20 - 4.24 X 2.72 MM

**GRADING RESULTS**

Carat Weight 0.30 CARAT  
 Color Grade G  
 Clarity Grade SI 2  
 Cut Grade VERY GOOD

**ADDITIONAL GRADING INFORMATION**

Polish VERY GOOD  
 Symmetry VERY GOOD  
 Fluorescence NONE  
 Inscription(s) LABGROWN IGI LG480171586

Comments: Faint Blue  
 As Grown - No indication of post-growth treatment.  
 This Laboratory Grown Diamond was created by High Pressure High Temperature (HPHT) growth process.  
 Type II

This Laboratory Grown Diamond (LGD) described in this Report has been analyzed, graded and Laserscribed® by International Gemological Institute (IGI). A LGD has essentially the chemical, physical and optical properties as a mined diamond, with the exception of being man-made (a manufactured product). LGD's are typically produced by CVD (chemical vapor deposition) or by HPHT (high pressure high temperature) growth processes and may include post growth modifications to change the color. IGI utilizes the most advanced techniques and equipment currently available including, binocular microscopes, diamond color masters, non-contact-optical measuring device, a wide range analytical techniques including FTIR, UV-VIS-NIR, raman spectroscopy, and fluorescence analysis at various excitation wavelengths. This Report includes advanced security features. This Report is neither a guarantee, valuation nor appraisal and by making the report IGI does not agree to purchase or replace the article.

INTERNATIONAL GEMOLOGICAL INSTITUTE, INC

**ELECTRONIC COPY LABORATORY GROWN  
DIAMOND REPORT**

**LG480171586**

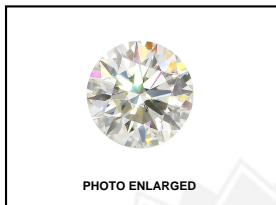
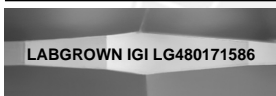
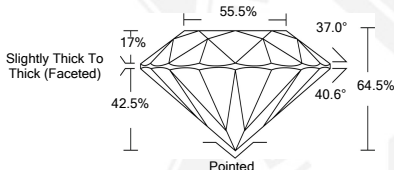


PHOTO ENLARGED



LABGROWN IGI LG480171586

LASERSCRIBE SM



**IGI LABORATORY GROWN  
DIAMOND ID REPORT**

06/30/2021  
 IGI Report Number LG480171586  
**ROUND BRILLIANT**  
**4.20 - 4.24 X 2.72 MM**  
 Carat Weight 0.30 CARAT  
 Color Grade G  
 Clarity Grade SI 2  
 Cut Grade VERY GOOD  
 Polish VERY GOOD  
 Symmetry VERY GOOD  
 Fluorescence NONE  
 Inscription(s) LABGROWN IGI LG480171586

Comments: Faint Blue  
 As Grown - No indication of post-growth treatment.  
 This Laboratory Grown Diamond was created by High Pressure High Temperature (HPHT) growth process.  
 Type II

**IGI LABORATORY GROWN  
DIAMOND ID REPORT**

06/30/2021  
 IGI Report Number LG480171586  
**ROUND BRILLIANT**  
**4.20 - 4.24 X 2.72 MM**  
 Carat Weight 0.30 CARAT  
 Color Grade G  
 Clarity Grade SI 2  
 Cut Grade VERY GOOD  
 Polish VERY GOOD  
 Symmetry VERY GOOD  
 Fluorescence NONE  
 Inscription(s) LABGROWN IGI LG480171586

Comments: Faint Blue  
 As Grown - No indication of post-growth treatment.  
 This Laboratory Grown Diamond was created by High Pressure High Temperature (HPHT) growth process.  
 Type II

THIS DOCUMENT WAS PRODUCED WITH THE FOLLOWING SECURITY MEASURES: SPECIAL DOCUMENT PAPER, INK SCREENS, WATERMARK BACKGROUND DESIGN, HOLOGRAM AND OTHER SECURITY FEATURES NOT LISTED AND DO EXCEED DOCUMENT SECURITY INDUSTRY GUIDELINES.

For Terms & Conditions and to verify this report, please visit [www.igi.org](http://www.igi.org)