



IGI GEMOLOGICAL REPORT

IGI LABORATORY GROWN DIAMOND GRADING REPORT

12/17/2020

IGI Report Number LG451057263

Shape and Cutting Style OVAL BRILLIANT

Measurements 10.10 X 7.13 X 4.43 MM

GRADING RESULTS

Carat Weight 2.02 CARATS

Color Grade J

Clarity Grade VS 2

ADDITIONAL GRADING INFORMATION

Polish EXCELLENT

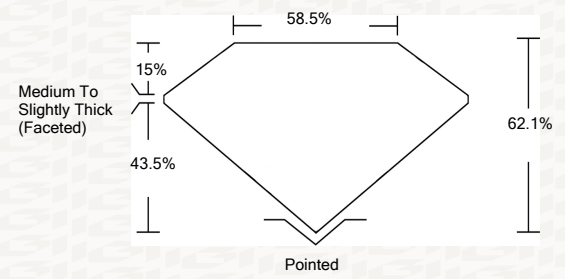
Symmetry EXCELLENT

Fluorescence NONE

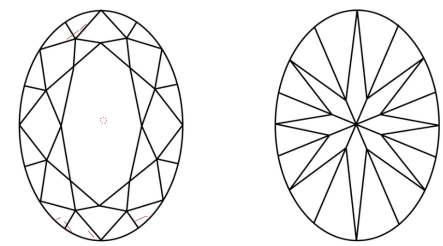
Inscription(s) LABGROWN IGI LG451057263

ADDITIONAL INFORMATION

PROPORTIONS



CLARITY CHARACTERISTICS



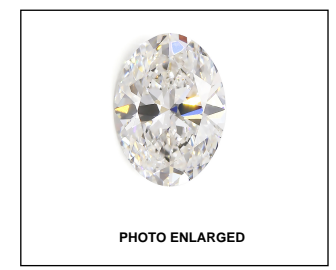
KEY TO SYMBOLS

Red symbols indicate internal characteristics. Green symbols indicate external characteristics.

GRADING SCALES

Table with 5 columns for Color Grading Scale (CL, NC, FT, VLT, LT) and Clarity (10x) Grading Scale (FL, IF, VVS, VS, SI, I).

The laboratory grown diamond described in this Report (Report) has been graded, tested, analyzed, examined and/or inscribed by International Gemological Institute (IGI). A laboratory grown diamond is one that has essentially the same chemical, physical and optical properties as a mined diamond...



LASERSCRIBE SM



IGI LABORATORY GROWN DIAMOND GRADING REPORT

12/17/2020

IGI Report Number LG451057263

Shape and Cutting Style OVAL BRILLIANT

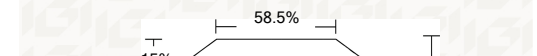
Measurements 10.10 X 7.13 X 4.43 MM

GRADING RESULTS

Carat Weight 2.02 CARATS

Color Grade J

Clarity Grade VS 2



Medium To Slightly Thick (Faceted)

Pointed

ADDITIONAL GRADING INFORMATION

Polish EXCELLENT

Symmetry EXCELLENT

Fluorescence NONE

Inscription(s) LABGROWN IGI LG451057263



IGI



This Report is subject to the terms and conditions

© IGI 2000, edition 2019 all rights reserved.

THE DOCUMENT WAS PRODUCED THE FOLLOWING SECURITY MEASURES: SPECIAL DOCUMENT PAPER, INK SCREENS, WATERMARK, BACKGROUND DESIGNS, HOLOGRAM AND OTHER SECURITY FEATURES NOT LISTED AND DO EXCEED DOCUMENT SECURITY INDUSTRY DUDLINES

Vertical text block containing report details: 12/17/2020, IGI Report No LG451057263, OVAL BRILLIANT, 10.10 X 7.13 X 4.43 MM, Carat Weight 2.02 CARATS, Color Grade J, VS 2, 62.1% Depth, 58.5% Table, Medium To Slightly Thick (Faceted) Girdle, Pointed Culet, EXCELLENT Polish, EXCELLENT Symmetry, NONE Fluorescence, LABGROWN IGI LG451057263 Inscription(s).