



IGI GEMOLOGICAL REPORT IGI LABORATORY GROWN DIAMOND GRADING REPORT

05/23/2020

IGI Report Number LG414082009

Shape and Cutting Style HEART BRILLIANT

Measurements 5.85 X 7.10 X 4.14 MM

GRADING RESULTS

Carat Weight 1.01 CARAT

Color Grade I

Clarity Grade SI 2

ADDITIONAL GRADING INFORMATION

Polish EXCELLENT

Symmetry VERY GOOD

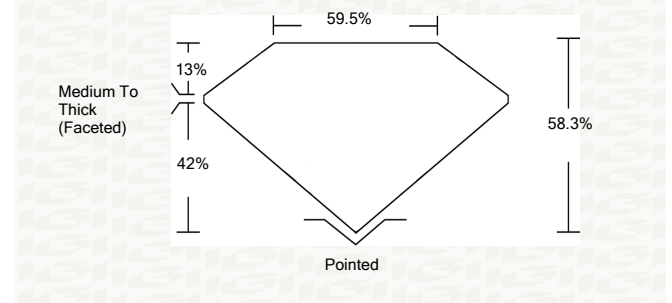
Fluorescence NONE

Inscription(s) LABGROWN IGI LG414082009

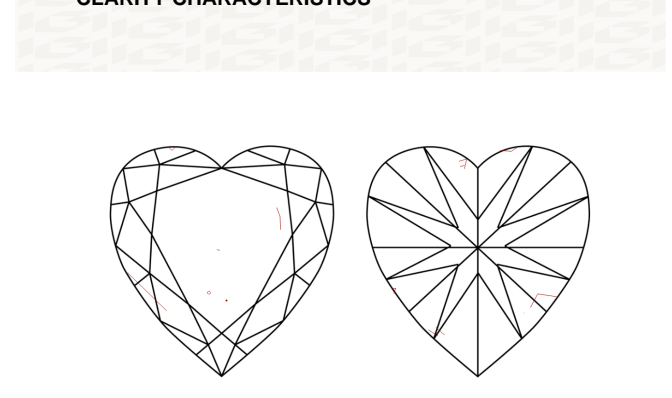
Comments: This Laboratory grown diamond was created by chemical vapor deposition process (CVD) Type IIa

ADDITIONAL INFORMATION

PROPORTIONS



CLARITY CHARACTERISTICS



KEY TO SYMBOLS

Red symbols indicate internal characteristics. Green symbols indicate external characteristics.

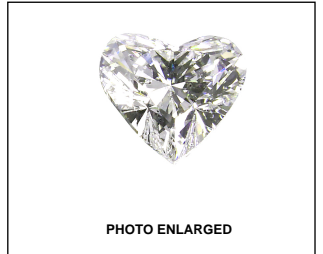
This Report is subject to the terms and conditions

© IGI 2000, edition 2019 all rights reserved.

GRADING SCALES

Table with 5 columns for Color Grading Scale (CL, NC, FT, VLT, LT) and Clarity (10x) Grading Scale (FL, IF, VVS, VS, SI, I).

The laboratory grown diamond described in this Report (Report) has been graded, tested, analyzed, examined and/or inscribed by International Gemological Institute (IGI). A laboratory grown diamond is one that has essentially the same chemical, physical and optical properties as a mined diamond...



LASERSCRIBE SM



THE DOCUMENT WAS PRODUCED THE FOLLOING SECURITY MEASURES: SPECIAL DOCUMENT PAPER, INK, SCREEN WATERMARK, BACKGROUND DESIGNS HOLOGRAM AND OTHER SECURITY FEATURES NOT LISTED AND DO EXCEED DOCUMENT SECURITY INDUSTRY DUDLINES

IGI LABORATORY GROWN DIAMOND GRADING REPORT

05/23/2020

IGI Report Number LG414082009

Shape and Cutting Style HEART BRILLIANT

Measurements 5.85 X 7.10 X 4.14 MM

Carat Weight 1.01 CARAT

Color Grade I

Clarity Grade SI 2

GRADING RESULTS

Polish EXCELLENT

Symmetry VERY GOOD

Fluorescence NONE

Inscription(s) LABGROWN IGI LG414082009

Comments: This Laboratory grown diamond was created by chemical vapor deposition process (CVD) Type IIa

ADDITIONAL GRADING INFORMATION

Polish EXCELLENT

Symmetry VERY GOOD

Fluorescence NONE

Inscription(s) LABGROWN IGI LG414082009

Comments: This Laboratory grown diamond was created by chemical vapor deposition process (CVD) Type IIa



Summary of report details: 05/23/2020, IGI Report No LG414082009, HEART BRILLIANT, 5.85 X 7.10 X 4.14 MM, Carat Weight 1.01 CARAT, Color Grade I, Clarity Grade SI 2, Depth 58.3%, Table 13%, Medium To Thick (Faceted), Polish EXCELLENT, Symmetry VERY GOOD, Fluorescence NONE, Inscription(s) LABGROWN IGI LG414082009. Comments: This laboratory grown diamond was created by chemical vapor deposition process (CVD) Type IIa.