

COLOUR GRADING SCALE

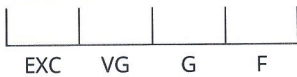


CLARITY GRADING SCALE

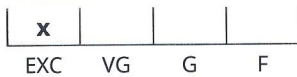


CUT GRADING SCALE

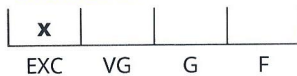
PROPORTIONS (round brilliants only)



POLISH



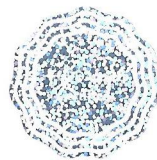
SYMMETRY



GRADING REPORT CHECK



Check your grading report online:
my.hrdantwerp.com



LABORATORY GROWN DIAMOND GRADING REPORT

N° 190000088763

June 04, 2019

Shape	emerald (variation)
Carat (weight)	2.00 ct
Fluorescence	nil
Colour Grade	slightly tinted white (J) equiv. col. grading
Clarity Grade	SI2
Cut	
Proportions	
Polish	excellent
Symmetry	excellent

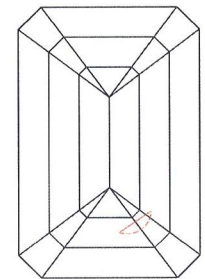
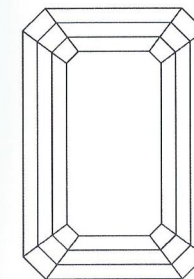
TECHNICAL INFORMATION

Measurements	8.05 x 6.14 x 4.20 mm
Girdle	medium 3.5 % polished
Culet	linear
Total Depth	68.4 %
Table Width	71 %
Crown Height (β)	12.5 %
Pavilion Depth (α)	52.0 %
Length Halves Crown	
Length Halves Pavilion	
Sum (α & β)	

LASER INSCRIPTION

Inscription on girdle:

LAB GROWN 190000088763



The stone in accordance with the mentioned number has been identified as a Laboratory Grown Diamond.

Selective characteristics have been indicated in order to clarify the description and/or for further identification. Symbols do not usually reflect the exact shape or size of the characteristic.

A Laboratory Grown Diamond is man-made but features the same optical and physical properties as a natural diamond including its chemical composition, refractive index and 4C's.